

MOBILE STREAMING APP - WIFIAV-HD

For systems sold July 2020 - Current

ANDROID INSTRUCTIONS

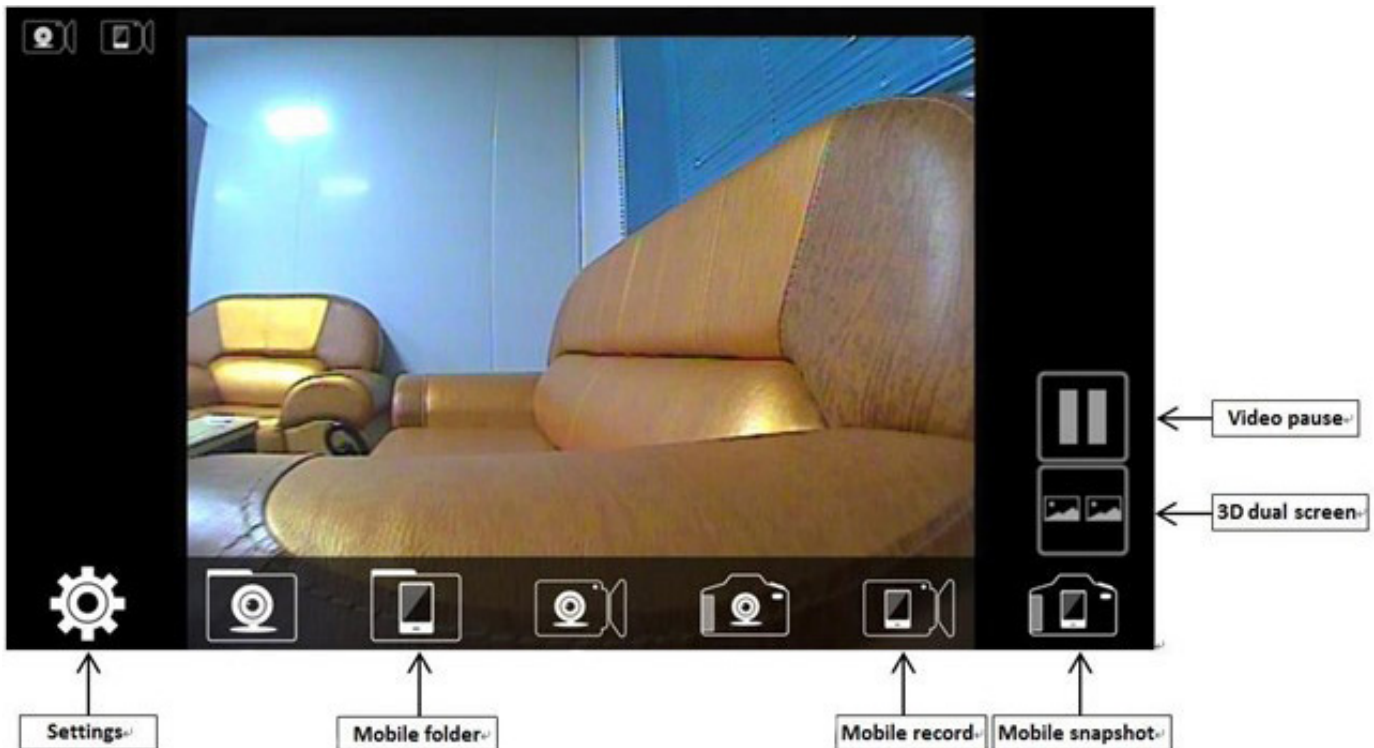
Installation:

1. Go to the Google Play store
2. Search "WIFIAV-HD" software and download the App.
3. Install the App.



Connecting:

1. Turn on your camera system.
2. Navigate to the WIFI settings on your Apple device. The initial SSID of the device is "the command module serial number for your unit" then type in the password (default password is "12345678"). We recommend that you **do not update the SSID** or password as there is no way to reset it if you forget it. It will have to be sent back and factory reset.
3. Navigate to the WIFIAV-HD app.
4. Open the App



NOTICE:

If you are experiencing unusual background noise on your unit while using the WIFI app, adjust your WIFI app device settings to channel 10, then restart your command module.

NOTICE:

To transfer snapshots and video from the phone, the phone must be restarted for the files to save to the gallery or photos on the phone. Once they save to the gallery or photos section on the phone they can be transferred.



APPLE INSTRUCTIONS

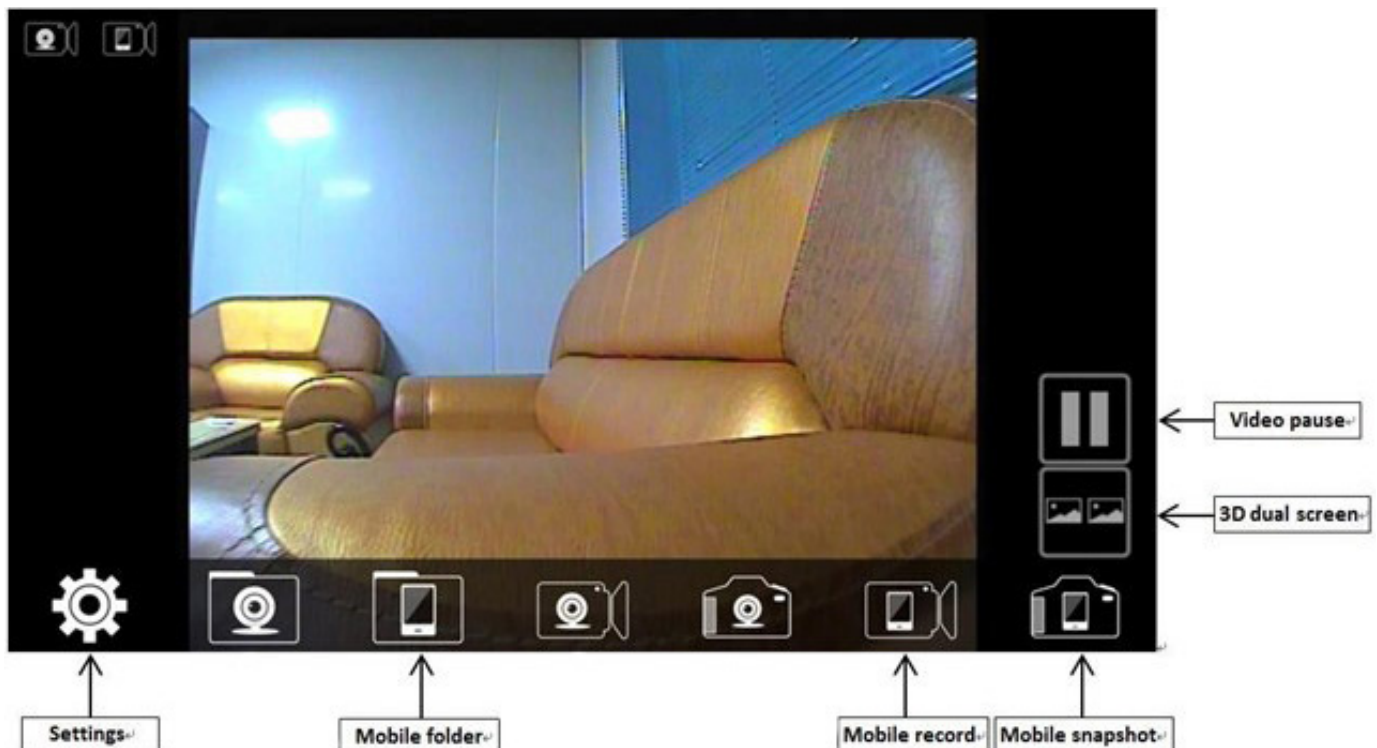
Installation:

1. Go to the App store
2. Search "WIFIAV-HD" software and download the App
3. Install the App.



Connecting:

1. Turn on your camera system.
2. Navigate to the WIFI settings on your Apple device. The initial SSID of the device is "the command module serial number for your unit" then type in the password (default password is "12345678"). We recommend that you **do not update the SSID** or password as there is no way to reset it if you forget it. It will have to be sent back and factory reset.
3. Navigate to the WIFIAV-HD app.
4. Open the App



NOTICE:

If you are experiencing unusual background noise on your unit while using the WIFI app, adjust your WIFI app device settings to channel 10, then restart your command module.



INSTRUCTIONS FOR TRANSFERRING IOS PHOTOS AND VIDEOS

User must have iOS 11 or newer installed on their device.

For transferring a recorded video

1. Open the settings icon on your device
2. Go to control center.
3. Ensure that “screen recording” is set to on (there should be a red circle with a line in the middle of it just to the left, this tells you it is set to “on”
4. Find video in the wifiav-hd app and select it. Press pause and make sure that the video is set at the beginning of the recording.
5. Do a diagonal swipe, from top right to bottom left of your iOS device to open the control center menu
6. You should see an icon that has a solid circle with another circle around it, press this to begin the recording. You will see a 3 second timer appear, this lets you know that the recording will start in 3 seconds
7. Press a blank spot on the screen to make the control center menu disappear, this should bring you back to the video you have ready to play
8. When you see a red oval appear in the top left corner of the screen press play on the video
9. When the video is done playing, tap the red oval in the top left corner, a prompt will appear asking if you want to stop screen recording, press stop
10. The video is now stored in the photos folder of the users device, in the “recents” and “videos” section of the app
11. From here user can play the videos and email them out

For transferring shapshots/photos

1. Go to the area in the wifiav-hd app that the snapshots/photos are stored
2. Select a photo
3. Press volume + and power button simultaneously (top button on the left side of the phone and the button on the right side of the phone).
4. This brings up a screen where you can manipulate the photo you just took. You can resize it and then save it or just save it right away by hitting “done”
5. Choose save to photos, that photo is now saved in the photos app, photo will now be saved in the photos app in the “recents” folder



Mobile Streaming APP - WiFi AV

For systems sold Feb 2020 - June 2020

Downloading the Application

1. Enter Google Play or Apple App Store
2. Search for "WiFi AV" App
3. Download "WiFi AV" App
4. Install "WiFi AV" App to your device

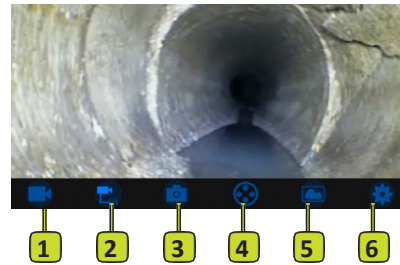
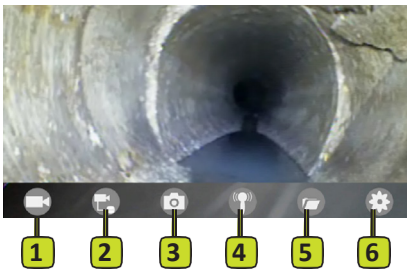
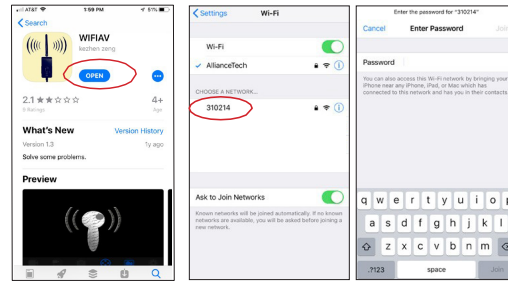
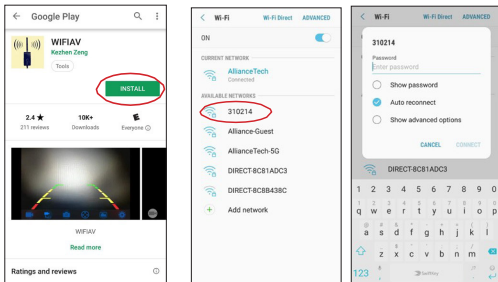
Connecting to Your Unit

1. Touch "Settings" icon. Go to "WIFI"
2. Unit Serial Number* will appear
3. Select your serial number
4. Password "12345678"
5. Exit "Settings". Open the "WiFi AV" App
6. Video should now appear on your phone

* Serial Number of Unit is located on the back of the command module

ANDROID APP

IOS APP



Using "WIFI AV" APP

1. RECORD - Press once to begin recording and a second time to stop recording.
2. NOT USED
3. SNAPSHOT- Press to take picture of screen.
4. NOT USED
5. FOLDER - View video recordings and snapshots. Select a video to play. Press the back arrow in the top left corner to return to your saved videos.
6. SETTINGS - Change your WIFI Settings.



Mobile Streaming APP - Go Vue

For systems sold 2018 - Jan. 2020

WiFi Inspection App

Your Opticam inspection system has an integrated wireless module built into the command module to stream live video to a smart phone or tablet. The live streaming application is supported by Apple and Android operating systems. With this app you can view, record and save both video and pictures on your mobile device.

Free to download, the Go Vue Wireless App is on the Apple Store for Apple devices, or the Google Play Store for Android devices. In the search section enter “Go Vue” or “govue”. Select the Go Vue app and download to your device. (See Figure 1. Below)

To operate wireless streaming from your Opticam command module, the Opticam unit must be powered on.

Step 1: Download the “Go Vue” app from app store on the mobile device you want to use.

Step 2: Go to your WiFi settings on your mobile device and select or connect to the “Insight Vision” WiFi network. If it is the first time your mobile device is connecting to the Opticam unit you will be prompted to enter a password. The password is “12345678” – Important: See notice below about passwords.

Step 3: Open the “Go Vue” app on your mobile device. The image from your Opticam camera should be showing on your mobile device through the “Go Vue” app. (Repeat step 2 if an image from your camera is not showing on your mobile device.)

Notice:

The default password is 12345678. It is not advised to change your SSID or password on the Opticam wireless module, there is no master reset if the SSID or password are changed and the password is forgotten. The system will have to be sent or brought to your nearest dealer for factory reset, not covered under warranty. (ONLY ONE DEVICE MAY BE CONNECTED TO

THE APP AT A TIME)

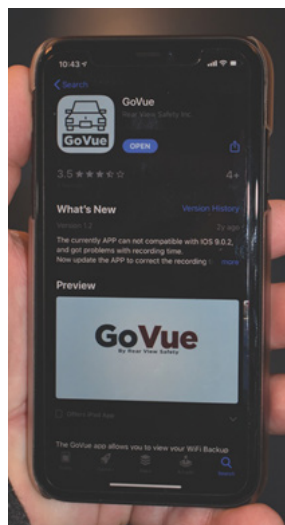


Figure 1. Go Vue Download Page



Mobile App Controls

1. Record/Stop – Use this function to record and stop recording. Tap once to start, tap again to stop.
2. Snapshot- Use this function to take picture
3. On Android device this function is not active

On Apple device this function stores your recorded inspection videos

4. On Android device this functions stores your recorded inspection videos and photos On Apple device this function stores your captured photos
5. *Settings* Use with caution, changes your Wi-Fi SSID and PASSWORD

Once changes are made, do not lose your password or you will have to send in your camera system for factory reset. *Not Covered Under Warranty

6. Default password connection is 12345678



Figure 1. Android Interface



Figure 1. IOS Interface

