



OPTICAM PUSH CAMERA

DEPENDABLE SEWER INSPECTION CAMERA

QUOTE

Quotation For		
Qty.	Product	Price
1	OPTICAM 200FT.	\$5,995
Total		

Customer Contact	
Name:	
Address:	
Phone:	

Sales Contact
Bob Masse
bob@insightvisioncameras.com
800-488-8177

Need Equipment Financing? Please call 800-488-8177 for more information.

PRODUCT OVERVIEW

The Opticam 2017 system has fully-loaded features to assist users with sewer inspections. The user-friendly keypad has been redesigned with an easy "On Demand" recording and snapshot button to help speed up inspection time. Technicians can easily record vital inspection data and client information using the available on-screen text-writer and footage counter. Built with a 1.3" modular, self-leveling camera head that is geared to inspect sewer pipes from 3" up to 12" inch diameter and a built-in sonde which broadcasts a 512 Hz frequency which is locatable with a 512 Hz locator.

Terms and Conditions: Make orders payable to Alliance Technology, LLC, 600 Dekora Woods Blvd., Saukville, WI 53080. Wire transfer, check, Visa, MasterCard, Amex (+2%) accepted. Payment in full is required prior to shipment. F.O.B Saukville, WI. All prices quoted in U.S. dollars and valid for 30 days and do not include duties and applicable taxes. **One (1) Year Limited Warranty.**

FEATURES AND BENEFITS

NEW MOBILE PHONE APP

Download Insight Vision App to an Android or Apple phone.



Wi-Fi Video Streaming App

View, record, snapshot and share inspection videos.



One-Touch Recording and Snapshot

Record and take pictures during an inspection.



Keypad and On-Screen Text Enable

Type in vital information to display and record on video.



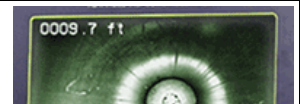
Built-in Microphone and Speaker

Record voiceover video and play it back.



On-Screen Footage Counter

View the distance pushed and display on screen.



Built-in 512 Hz Frequency Sonde

Broadcast a 512hz signal to be locatable with a 512hz locator.



Optional External Battery Power Back

Power up the system for up to 6 hours on a full charge.



QUICK CHANGE MODULAR CAMERA

- 1.3" Diameter Camera Head
- Quick Camera Head Repair
- Clear Resolution Video
- Clear view Sapphire Glass
- Durable Stainless Steel Body
- Self-Leveling Camera Head





OPTICAM PUSH CAMERA

INCLUDED WITH THE CAMERA SYSTEM



REEL COVER



2" SKID



3" SKID



USB STICK



ACCESSORY BAG



CAR POWER CORD



POWER CORD

SPECIFICATIONS

CONTROL SYSTEM



Case Dimensions: 12"L x 9"W x 11"H
 Video Resolution: 640 x 480
 Data Storage: 8GB USB stick * **Included with the system**
 Keyboard: Full "QWERTY" style membrane
 Recording format: H.264
 Image Capture: JPG
 Text Generator: Yes
 Distance Counter: Displays on screen FT/M
 Video Out: No
 Controls: One Touch Recording
 Power Source: 12V 5Amp DC * **Included with the system**
 LCD Size: 10.4"
 Weight: 8 lbs.
 Battery: External Lithium-ion * **Optional Add-on**

CAMERA HEAD



Self-Leveling: Yes
 Dimensions: 2" L x 1.3" Diameter
 Camera Resolution: 640 x 480
 Weight: 5.9 Ounces
 Light Ring: 12 LED
 Imager Sensitivity: .025 Lux
 Image Size/ Type: 1/4" CMOS
 Construction: Stainless Steel Body
 LED Window: Polycarbonate
 Camera Window: Sapphire Glass

PUSH ROD/ FRAME



Cable Length: 200-300-400ft. Available.
 Pipe Size: 3" to 12"
 Cable Jacket: Polypropylene jacket
 Cable core: Spiral Wound Fiberglass push rod
 Push Rod Dia.: 0.475" OD
 Dimensions: 30"L x 16-1/2"W x 32-1/2"H
 Weight: 62 lbs. (200 ft.)
 Sonde Frequency: 512Hz
 Protective Skids: 2" & 3" * **Included with the system**

MOBILE PHONE APP



Local Wi-Fi: Stream Wireless Video (No Internet Needed)
 Operating System: Android & ISO devices capable (Free Download)
 Controls: View, record, playback and snapshot
 File transfer: Upload to Email or YouTube
 Video Connection: Video Stream Up to 100ft.
 Image Format: JPG